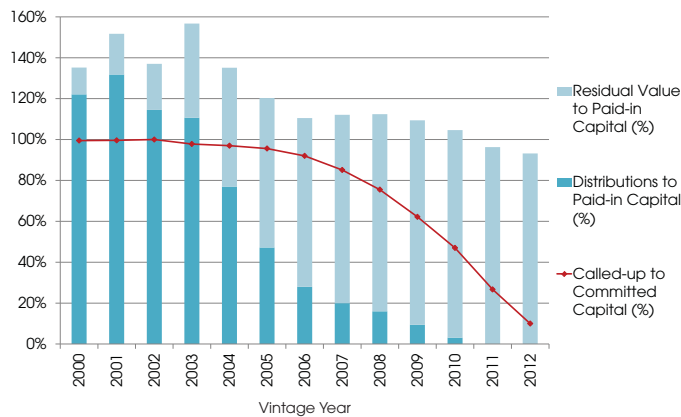




Q3 2012 Performance Benchmarks

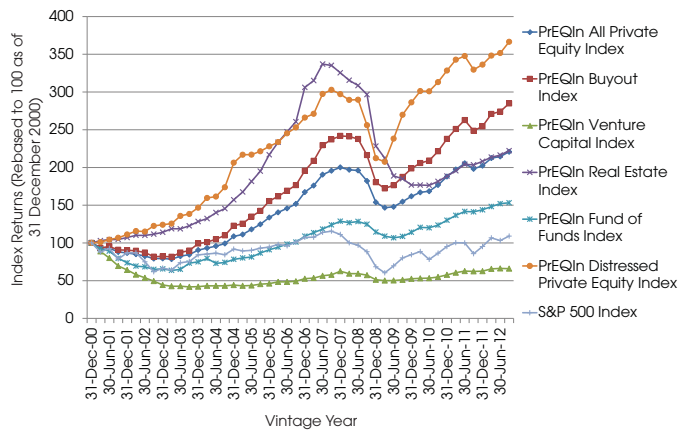
Hayley Wong examines private equity performance figures as of 30th September 2012.

Fig. 1: All Private Equity - Median Called, Distributions and Residual Value Ratios by Vintage Year as of 30-Sep-12



Source: Preqin Performance Analyst

Fig. 2: PRQIn - Private Equity Quarterly Index: All Strategies



Source: Preqin Performance Analyst

Fig. 3: All Private Equity - Performance Benchmarks as of 30-Sep-12

Vintage Year	No. of Funds	Median Fund			Multiple Quartiles (X)			IRR Quartiles (%)			IRR Max/Min (%)	
		Called (%)	Dist (%) DPI	Value (%) RVPI	Q1	Median	Q3	Q1	Median	Q3	Max	Min
2012	108	10.0%	0.0%	93.2%	1.00	0.94	0.76	n/m	n/m	n/m	n/m	n/m
2011	202	26.7%	0.0%	96.3%	1.08	0.99	0.91	n/m	n/m	n/m	n/m	n/m
2010	153	47.0%	3.1%	101.5%	1.20	1.08	0.99	n/m	n/m	n/m	n/m	n/m
2009	124	62.2%	9.4%	100.0%	1.30	1.18	1.02	18.2%	12.0%	3.3%	90.0%	-29.9%
2008	304	75.5%	16.0%	96.4%	1.32	1.15	1.02	15.5%	8.0%	1.3%	47.2%	-32.1%
2007	363	85.1%	20.0%	92.1%	1.35	1.19	1.03	12.2%	7.3%	2.0%	64.1%	-38.8%
2006	314	92.0%	28.0%	82.5%	1.38	1.20	1.00	9.2%	5.7%	0.5%	30.4%	-100.0%
2005	262	95.6%	47.2%	73.1%	1.52	1.24	1.06	11.9%	6.4%	1.7%	105.5%	-36.5%
2004	163	97.0%	77.0%	58.1%	1.79	1.36	1.08	17.9%	9.0%	3.3%	79.9%	-26.0%
2003	125	97.8%	110.7%	46.0%	1.83	1.49	1.28	21.1%	12.7%	6.3%	59.2%	-86.2%
2002	122	100.0%	114.5%	22.5%	1.95	1.55	1.16	24.3%	11.0%	4.1%	93.0%	-47.2%
2001	162	99.6%	131.8%	19.9%	2.11	1.58	1.24	24.9%	12.2%	4.6%	94.0%	-19.5%
2000	235	99.5%	122.1%	13.1%	1.79	1.39	1.00	18.6%	8.6%	1.1%	137.9%	-66.2%

Source: Preqin Performance Analyst

Data Source:

Preqin's **Performance Analyst** contains full metrics for over 6,200 individual named funds. Identify which fund managers have the best track record with performance benchmarks for private equity funds of all types and geographic locations.

To find out how Performance Analyst can help you, or to register for a demonstration, please visit:

www.preqin.com/pa