



# Fees and Hurdle Rates in Focus

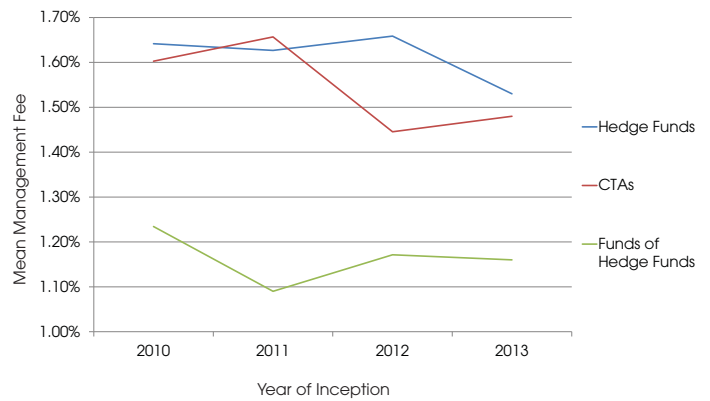
We examine hedge fund management and performance fees, as well as hurdle rates, including breakdowns by type of hedge fund and strategy.

Fig. 1: Mean Hedge Fund Management Fee and Performance Fees by Strategy and Fund Type

	Mean Management Fee (%)	Mean Performance Fee (%)	Mean Lock-up Period (Months)
Single-Manager Funds	1.61	19.14	6.0
Funds of Hedge Funds	1.29	8.57	6.2
UCITS Funds	1.42	16.72	0.0
CTAs	1.72	19.81	2.2
Event Driven Strategies	1.57	18.56	10.0
Macro Strategies	1.65	18.59	3.1
Long/Short	1.56	17.45	6.1
Multi-Strategy	1.39	12.19	6.0
Relative Value	1.47	18.5	4.5
Other Strategies	1.50	16.88	10.1

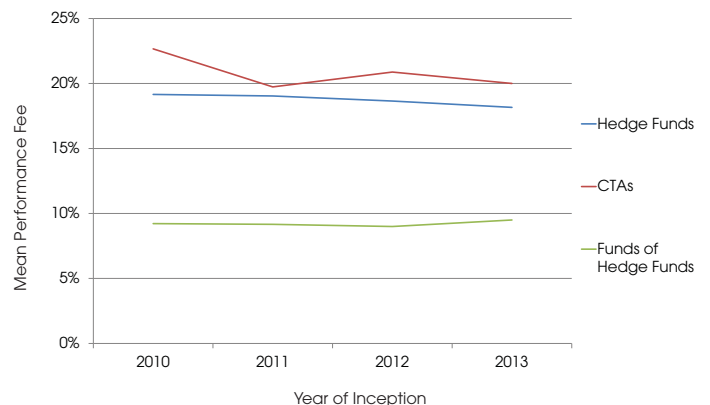
Source: Preqin Hedge Fund Analyst

Fig. 2: Mean Hedge Fund Management Fee Charged by Year of Inception



Source: Preqin Hedge Fund Analyst

Fig. 3: Mean Hedge Fund Performance Fee by Year of Inception



Source: Preqin Hedge Fund Analyst

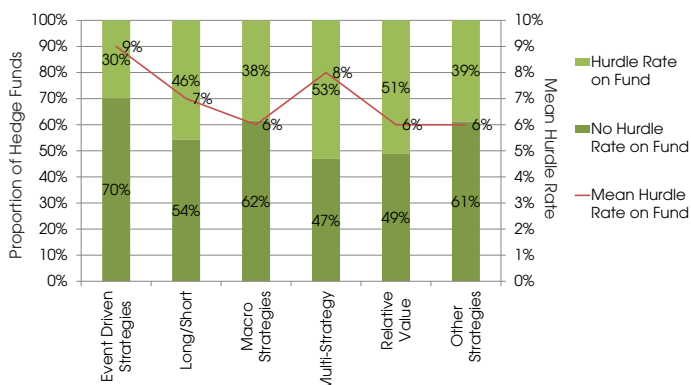
### Subscriber Quicklink:

Subscribers to Preqin's [Hedge Fund Analyst](#) can click [here](#) to view the 2,214 hedge funds that have a hurdle rate. Use the Advanced Search to analyze these funds further by manager location, fund focus, strategy and more.

Not yet a subscriber? For more information or to register for a demonstration, please visit:

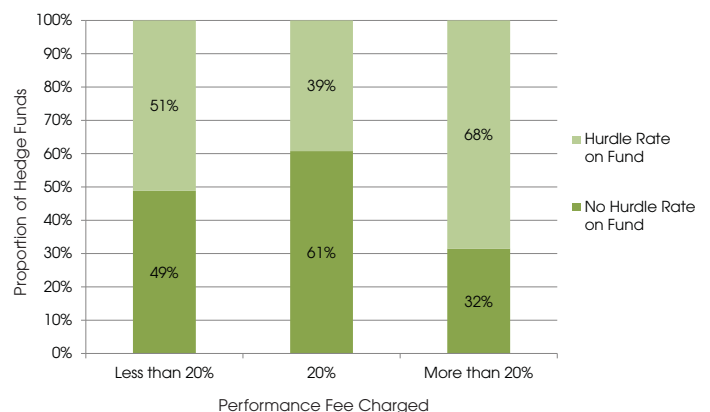
[www.preqin.com/hfa](http://www.preqin.com/hfa)

Fig. 4: Proportion of Hedge Funds that Use Hurdle Rates and Mean Hurdle Rate by Top-Level Strategy



Source: Preqin Hedge Fund Analyst

Fig. 5: Proportion of Hedge Funds that Use Hurdle Rates by Performance Fee Charged



Source: Preqin Hedge Fund Analyst